

800W | FLEXIBLE BALCONY SOLAR SYSTEM



THE BALCONY PV SYSTEM ONLY NEEDS 4 PARTS

- PHOTOVOLTAIC MODULE
- MICROINVERTER
- POWER CORD
- FIXING STRAP



THE BENEFITS OF BALCONY PHOTOVOLTAICS

- COST SAVING
- EASY TO INSTALL
- PLUG AND PLAY
- SAFE AND RELIABLE



ACCESSORIES



800W MICRO INVERTER
(1 UNIT)



200W FLEXIBLE MODULE
(1140*915*18mm, 4 UNITS)



AC CONNECTOR CABLE
(6A, 250VAC, 3*1.0MM², 5±0.2M, -40°C~85°C, 1 UNIT)



FIXING STRAP
(45 UNITS)



DC EXTENSION CABLE
(4MM, 1500V, 35A, 2M*2 UNITS. 1.2M*2 UNITS)

PACKAGE

WE PROVIDE A SAFE PACKAGING SOLUTION THAT ENSURES PRODUCT SAFETY



MICRO INVERTER



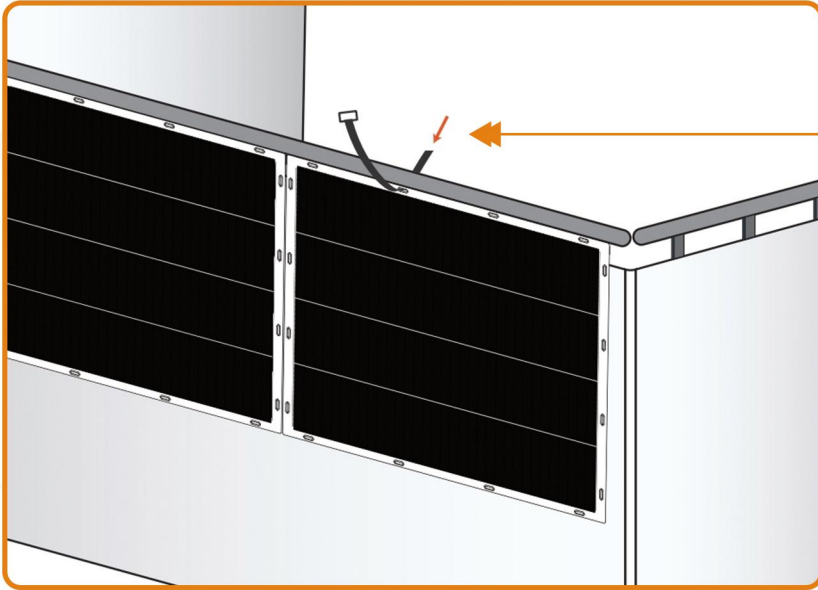
MICRO INVERTER	800W
PEAK POWER MPPT VOLTAGE RANGE (V)	30-45
OPERATING VOLTAGE RANGE (V)	26-60
MAXIMUM INPUT VOLTAGE (V)	60
NOMINAL OUTPUT VOLTAGE/RANGE (V)	230V/207-253V
MAXIMUM CONTINUOUS OUTPUT CURRENT (A)	3.7A
MAXIMUM INPUT CURRENT (A)	15A
NOMINAL FREQUENCY//RANGE(HZ)	60/59.3-60.5HZ, 50/48-51HZ
WEIGHT (KG)	3KG
INGRESS PROTECTION	IP67
COMMUNICATION	WI-FI /802.11B/G/N 2.4GHZ
PEAK CONVERT EFFICIENCY	>95%
NOMINAL MPPT EFFICIENCY	>99.8%

PV MODULE

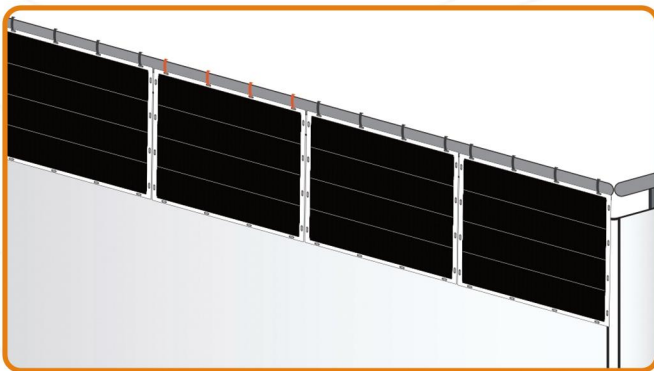


MAX. POWER (W)	200W
MAX. POWER VOLTAGE VMP (V)	15.30V
MAX. POWER CURRENT IMP (A)	13.10A
OPEN CIRCUIT VOLTAGE VOC (V)	18.55V
SHORT CIRCUIT CURRENT ISC (A)	13.70A
DIMENSIONS(L*W*H) (MM)	1140*915*18 MM
SOLAR CELL	MONOCRYSTALLINE SILLICON CELL
NO. OF CELLS	54(9*2*3)
WEIGHT (KG)	3.3KG
MODULE EFFICIENCY (%)	19.17%
MAXIMUM SYSTEM VOLTAGE (V)	1000VDC

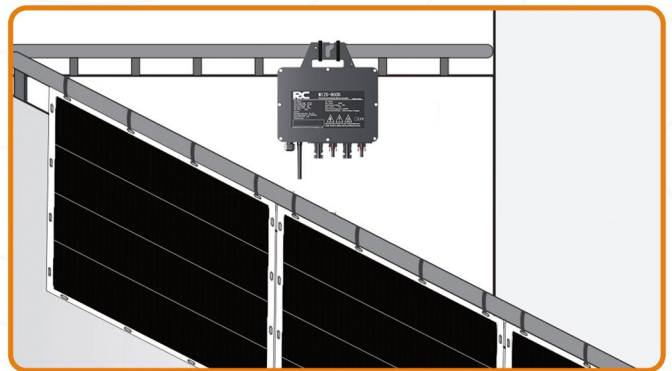
INSTALLATION



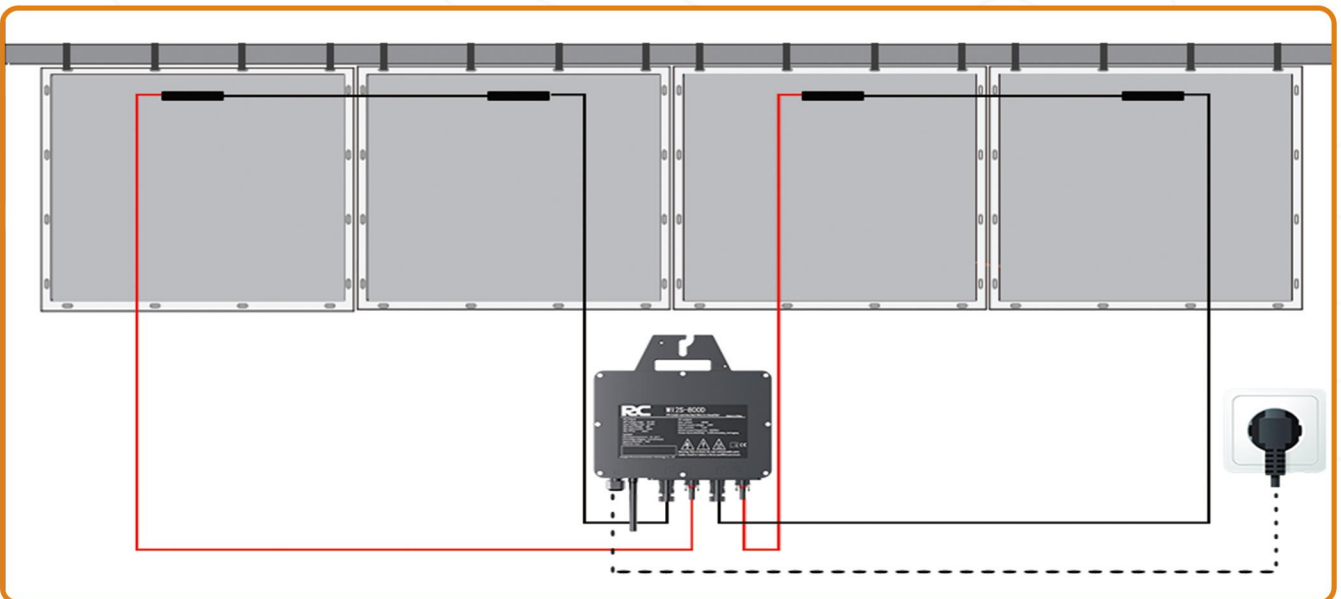
FIX THE SOLAR PANEL WITH STRAP TO THE BALCONY.



FOLLOW THE FIRST STEP, FIX ALL THE SOLAR PANELS.



FIX THE MICRO INVERTER WITH STRAP TO THE BALCONY.



CONNECT SOLAR PANELS, TWO IN SERIES, TWO IN PARALLEL.
CONNECT EXTENSION CABLE AND PLUG IN POWER SUPPLY.